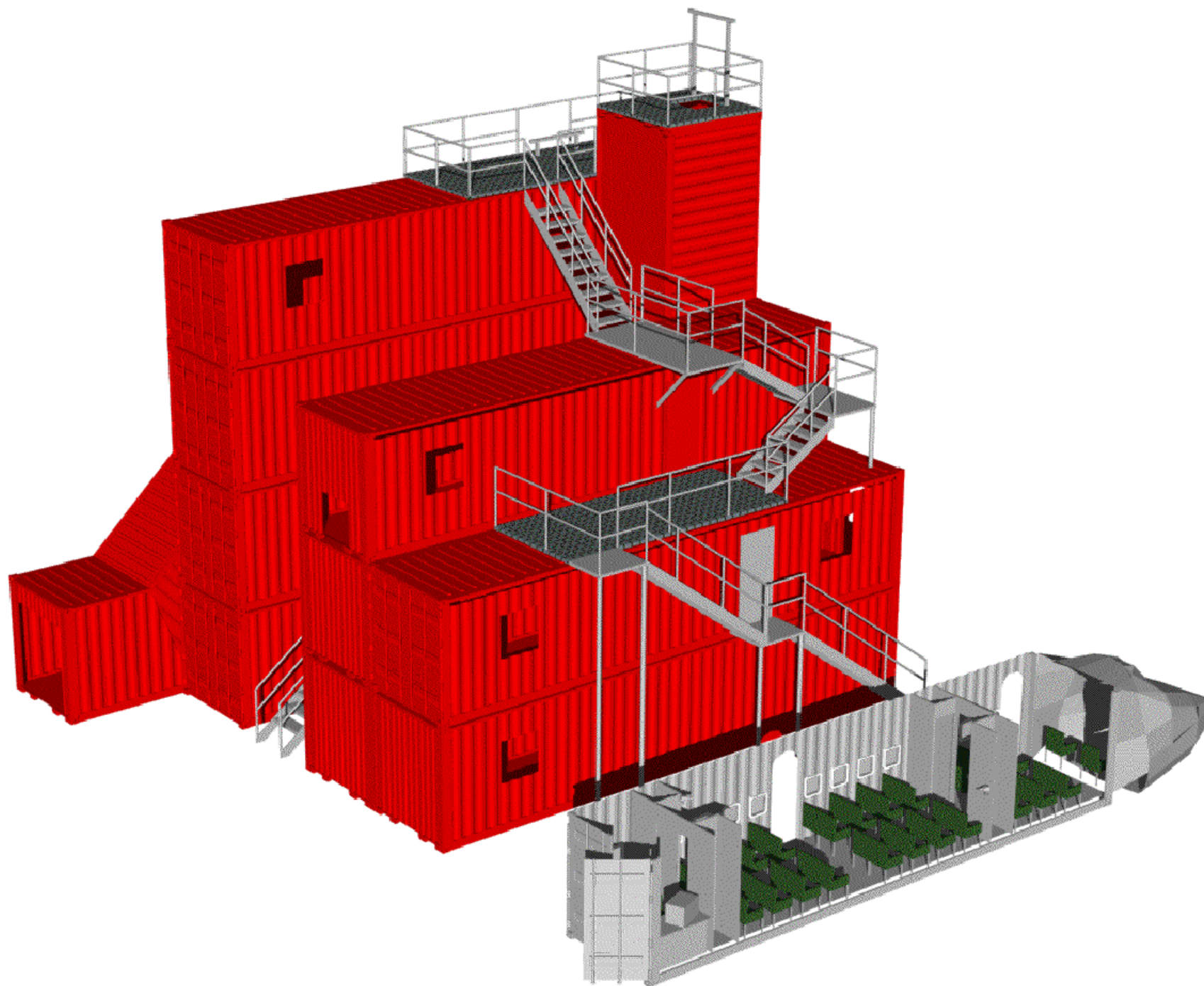


# FIRE TRAINING FACILITY #2



## UNIT SPECIFICATIONS

**13 TOTAL UNITS**  
**5 TRAINING LEVELS**  
**1 40' REPEL WALL**  
**1 17' REPEL WALL**  
**1 REPEL TUNNEL**  
**11 DOORS**  
**12 WINDOWS**  
**3 HATCHES**  
**7 WALKTHROUGHS**  
**3 EXTERIOR STAIR UNITS**  
**1 INTERIOR 3 LEVEL**  
**STAIRWELL**  
**3 EXTERIOR TRAINING DECKS**

**TOTAL SQ. FT.**  
**= APPROX. 3840**

