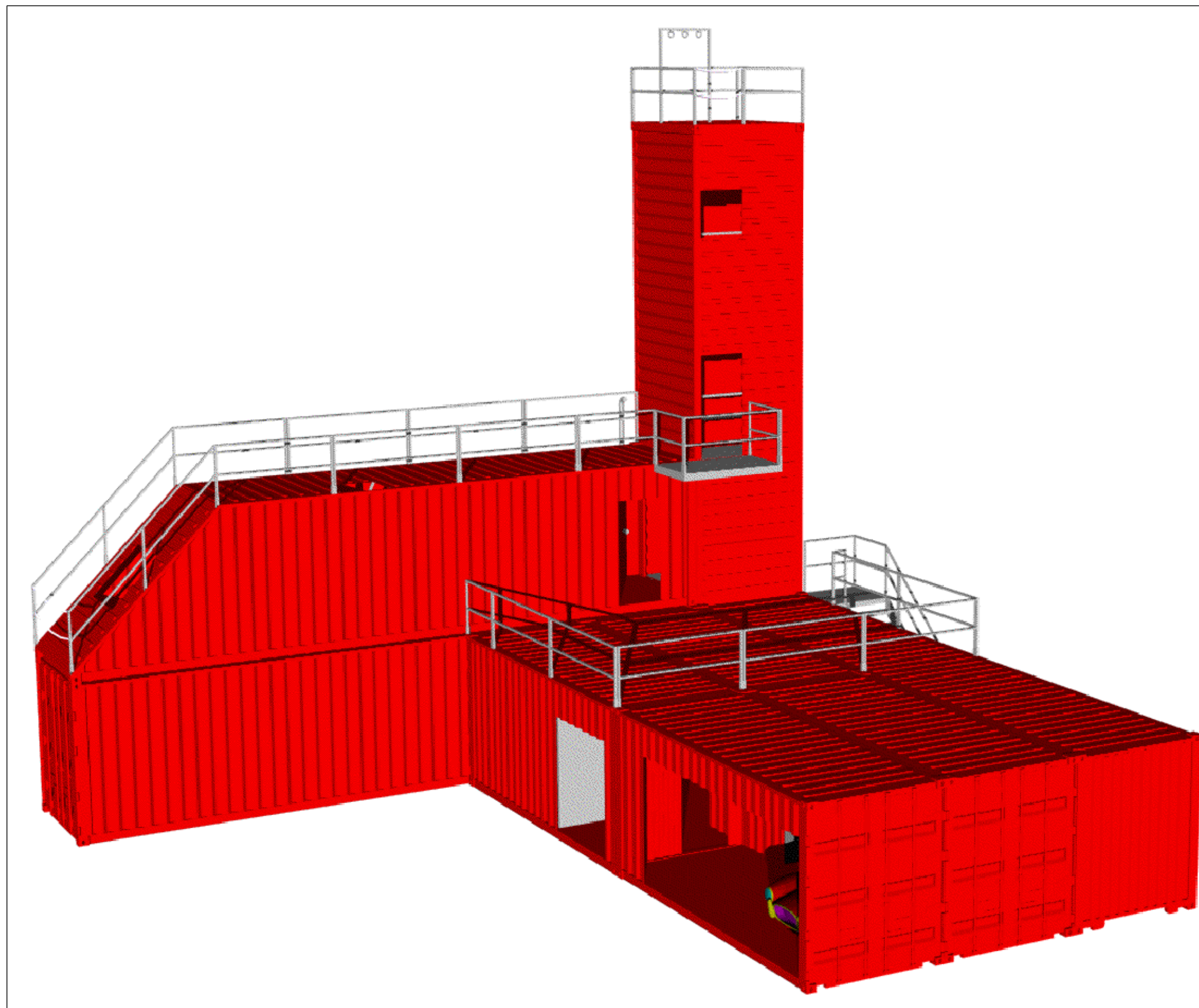


FIRE TRAINING FACILITY #134



UNIT SPECIFICATIONS:

- 4 40' CONTAINERS**
- 4 20' CONTAINER**
- 4 TRAINING LEVELS**
- 1 RAPPEL STATION**
- 10 STANDARD DOORS**
- 1 DOUBLE DOOR**
- 2 STANDARD WINDOWS**
- 1 DENVER DRILL WINDOW**
- 1 INTERIOR STAIR UNIT**
- 1 EXTERIOR STAIR UNIT**
w/ LANDING
- 1 ROOF HATCH w/ DROP LADDER**
- 1 OSHA LADDER**
- 2 BURN ROOMS**
- 2 BURN DOORS**
- 2 BURN WINDOWS**
- 2 BURN CARTS**
- 1 STANDPIPE (3 CONNECTIONS)**
- CONFIGURABLE CONFIDENCE MAZE (16 PANELS)**
- 1 CLOSET DOOR SIMULATOR**
- 1 PITCHED ROOF SIMULATOR**
w/ WOOD CHOP OUT
- 24 SAFETY RAILINGS (PER 8ft)**

TRAINING AREA
TOTAL SQ. FT. = 2716 SQ.FT.

